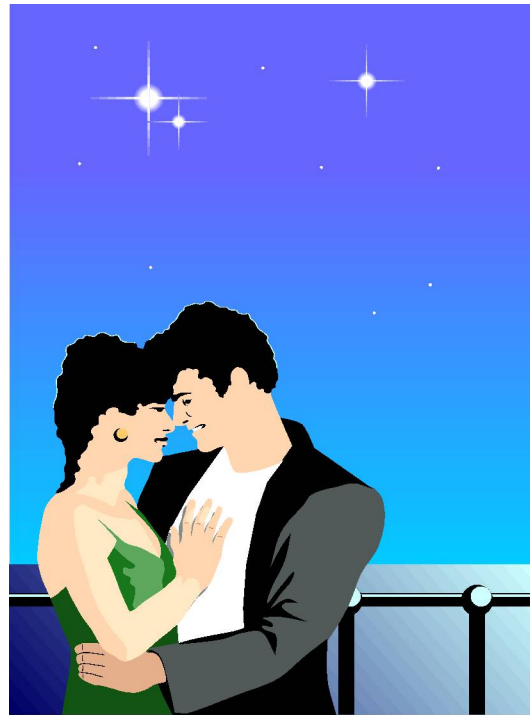


LOVE ♀♂ CARDS



*In-Depth Relationship Analysis
for New and No
Created on 1/3/2018*

How to get the most from this Relationship Report

The success of your relationship is never determined by your Birth Cards or your connections alone. Though some cards have it easier than others in this important area of life, ultimately it is each individual who holds the responsibility for the success or failure of their relationship. This report will act as a guide to help you achieve that success if that is what you truly want. Pay special attention to the affirmations listed for each connection in this report.

Welcome to your personal Love Cards report. The purpose of this report is to reveal as much information about you and your partner as possible, using an ancient and highly accurate system called The Book of Destiny. It is our hope that this report will enlighten you a little, and maybe even help you to make more powerful and happy choices in the areas of love and marriage. This report will explain many things about you, your partner, and how the two of you interact. However, in no way is this meant to tell you whether or not you will be successful as a couple. That success is always in your hands. No matter what connections you share, this relationship can be successful if both partners want it and are willing to commit to making it happen. However, you may discover herein just how easy or challenging that may be for the two of you.

Your Relationship Report consists of two separate parts. The first part is where you will find the description of each of your Birth Cards and Planetary Ruling Cards, if you have them. This section will reveal some of your personality traits, values, and other factors that make each of you who you are. You can get a basic feeling for each of you in this section and perhaps get a new perspective on who you are. This section may also reveal some of your relationship patterns - what sorts of people you are each attracted to, whether you are inclined to commitment or not, and other factors that may influence your love life.

Once you have learned something about each of you separately, you are ready to learn about how the two of you connect energetically. In the second part you will find out exactly what 'connections' you share with your partner that explain what each of you experiences when you are together. This is where you will find out what areas are easy or challenging for the two of you, what things you may like or dislike about your partner and why. Your connections explain how your relationship will be experienced by both of you. Some connections are good for sex, others for marriage, and others for working or business relationships.

This report was created with the intention of opening up doors of understanding and awareness. May your awareness grow and along with it, your understanding of your life and your happiness with it.

Relationship Report for New and No



Report Overview - Significators and Connections

The cards that represent us are called our Personal Significators. The most important of these is our Birth Card but there are others that play an important part as well. On this page are listed the personal significators for each person that are used to find the relationship connections in this report.

Personal Significator(s) for New, born on 8/15/1945



Birth Card

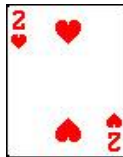


1st Karma Card

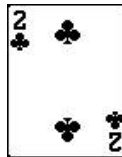
Personal Significator(s) for No, born on 3/9/1966



Birth Card



Planetary Ruling Card



2nd Karma Card

The Relationship Connections used in this Report

The heart of this report are the energetic connections found between this couple. Here is a list of ones chosen for this report, from the first to the last.



New and No are Saturn to each other Life Spread



New and No are Venus to each other Spiritual Spread



No is the Saturn Card to New Life Spread



New is the Venus Card to No Life Spread



No is the Mars Card to New Spiritual Spread



New is the Cosmic Reward Card to No Spiritual Spread



No is the Jupiter Card to New Life Spread



New is the Mars Card to No Life Spread



No is the Saturn Card to New Spiritual Spread



New is the Venus Card to No Spiritual Spread

All about New's Birth Card



Our Birth Card is our most important symbol of who we are in this lifetime. It is the card that we most identify with, and through which we have the greatest gifts to share with those around us. It is also called our Sun Card and our Soul Card.

The Jack of Clubs Person

The Mentally Creative Card

Creative, dishonest, or a mixture of both? As we can imagine, those who are the most creative can also be the most dishonest and vice versa. Here is a card of mental and financial creativity and these people are no lazy bones. Their brilliant minds are far ahead of the common person and society. They are the people of the Aquarian Age, being neither entirely male nor female. They are progressive and on the cutting edge of the evolution of our society and world.

As members of the royal family they dislike pettiness and tend to be somewhat impatient with the failings of others. They need respect and a position that allows their brilliant minds free reign to create and explore. They are never at a loss for ideas, some of which will bring them huge financial returns. On the negative side, the Jack of Clubs can be irresponsible and in some cases, dishonest. They can see things from so many levels that nothing is really 'wrong' - it is just another way of looking at things. And they can make up a story so fast that they can explain away practically anything. They don't get away with much in that regard though. Saturn's hand always reminds them of the boundaries that keep them balanced and fair. The trouble comes when they start believing their own stories, departing from reality a little too far and creating a lot of hardship before getting back on course.

They are essentially good and giving people. Even though they are argumentative at times, they are loving and friendly to all they meet.

Some of the Jack of Clubs Issues Concerning Relationships

Such a strong and fixed mental approach to life can have its share of challenges for the Jack of Clubs. Mental approaches don't always work in the realms of love. However, these people do not have particularly bad karma in this area. They need someone who is their friend first, and who will allow

All about New`s Birth Card

them some freedom to do and be themselves. If they have this, they are faithful and devoted. The men are excellent lovers and the women excellent companions.

They often have to contend with the ill health of a loved one, or their own health problems that are rooted in some emotional conflict. In most cases their health issues are related to some emotional cause, whether it be family or lover related.

All about New`s Planetary Ruling Card



The Planetary Ruling Card acts like a second Birth Card to give you a new slant on your personality and character traits. It is very important in terms of your personal relationships since it represents a part of you that you identify with strongly.

Leos Have No Separate Planetary Ruling Card

Because you are a person born under the royal sign of the Sun, your Planetary Ruling Card is the same as your Birth Card. What this tells us is that you are much like a double or triple version of your Birth Card. Whatever qualities you have, according to your Birth Card, have been doubled in your case and of course, you tend to dramatize these qualities to the max at times. Of you, people might say, "he (or she) is such a card!" because you put so much of yourself into whatever expression you have to show to the world. You have a lot of potential in terms of leadership and have an opportunity to utilize the characteristics of your Birth Card to lead others and help them in many ways. You also tend to have a strong romantic nature that in some cases, can interfere with long-term commitments.

All about No`s Birth Card



Our Birth Card is our most important symbol of who we are in this lifetime. It is the card that we most identify with, and through which we have the greatest gifts to share with those around us. It is also called our Sun Card and our Soul Card.

The Ace of Spades Person

The Card of Ambition and the Magi Card

The Ace of Spades is the ancient symbol of the secret mysteries, the most spiritual card in the deck, and yet, also the most ambitious and material-oriented in many cases. This is called the Magi Card because the Ace of Spades was, and still is, the symbol used by many of the esoteric schools of knowledge, among them The Order of the Magi, whose members are responsible for the preservation and dissemination of this card system that you are now reading about.

The Ace of Spades person usually has a life-long conflict between their material, worldly urges and their deep, past-life spiritual heritage. Usually the Ace of Spades person is either highly materialistic and driven by his or her work and career or highly spiritual and esoteric minded. Their Karma Card, the Seven of Hearts, suggests trials in the realm of relationships, family and friendships. They are learning to let others be themselves and how to love them unconditionally. Sometimes the lessons are very painful. In the end, these people become very loving and considerate of others. Their mission is to find the inner peace that comes through a life of service and dedication to higher principles. As their karma from previous births is discharged, they come to realize this and learn to follow the unwritten law. In many ways they have put themselves upon the cross. Whenever they deviate from the law, or disregard their spiritual nature they seem to be unjustly punished.

Those Ace of Spades who are mostly materially minded seem to have one problem after another. However, whenever they do follow higher principals and listen to their inner voice, they are guided and protected, finding the inner peace they seek through awareness of their wealth of spirit.

Some of the Ace of Spades Issues Concerning Relationships

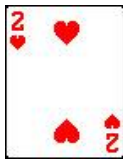
The success or failure of the Ace of Spades relationships depends mostly

All about No`s Birth Card

upon whether or not they are taking a more spiritual approach to their life in general. Those who are more materialistically minded find themselves challenged again and again in the areas of love. Emotional attachment brings continual pain. There can be betrayal and disillusionment over and over until they see their own subtle attachments that lie at the root of these problems. Personal fulfillment in love is delayed for most of them until they have reached some level of unattachment to others and have learned how to give themselves the love they seek from others. There is a difficult path in relationships, but not impossible.

At heart they are very loving and giving, with precious dreams of love that await fulfillment. This ideal relationship is not beyond their capability, but it usually comes later in life rather than earlier.

All about No`s Planetary Ruling Card



The Planetary Ruling Card acts like a second Birth Card to give you a new slant on your personality and character traits. It is very important in terms of your personal relationships since it represents a part of you that you identify with strongly.

Two of Hearts as Your Planetary Ruler

This is a card of the heart, and it is called the 'Lovers Card'. Therefore, we know that relationships are extremely important to you, especially those of a more intimate nature. This card gives you a pleasing personality, one that others find soothing and attractive. It also makes you an eternally curious person who loves to learn new things and read new books. But more than anything else, you are on a search for the perfect love partner. You have high standards for love and are probably attracted to those with whom you have shared past lives. Only the highest form of love will truly satisfy you. It must be eternal and mystical. But, until you find that perfect love, you will usually make sure there is someone in your life that you can love. Love is very important to you.

All about the Love Connections you share

Look at each connection between you as a cosmic link that connects each of you to some part of yourself that you want to look at, develop or explore in some way. Your partner is your mirror into your own soul.

This report uses the most advanced techniques available to give some real insight into the inner workings of your relationship. Using the ancient system, now known as the Book of Destiny, it determines the energy 'connections' that reflect exactly how the two of you interact. These connections are essentially described as planetary energies, for example Mars or Venus. Some connections are harmonious, while others create certain kinds of friction or stress between you. All of the connections between you serve an important purpose and contribute to the experience that you share. Keep in mind that most connections have a higher expression and a lower one. The affirmations given for each connection indicate how to access the highest expression of each one.

The connections are listed in the order of their importance. The first connection is the most important and the second is the next important, etc. But even the last connection between you probably manifests itself in your experience together. Therefore, regard all of them as having some important information for you.

You may have only a few connections, two or three, or you may have as many as fourteen. Each couple has a unique number and kinds of connections - as unique as the love and feelings they share for each other.

Look to see if you have more than one kind of connection between you. For example, you may have a total of two or three Mars connections between you. When this is the case, you should study these connections carefully, realizing that this probably indicates some of the most important reasons that you are together and the issues that you most often face together.

Finally, there are no bad connections. If we are attracted to someone so much that we spend time with them, there are important reasons for this. The descriptions of the connections in this report can help you understand why you have made the choice to be together, which can in turn help each of you to understand your individual personalities and needs better. Of course, some connections indicate stress and challenge, but this is because we often use relationships as the vehicle through which we resolve our own inner conflicts. If the love is there, there are many good things for each of you to gain from being together.

The First Connection Between You



New

No

Your first connection is always considered the most important of all and, in most cases, will represent the dominant pattern that is your relationship. Study the connection described below carefully, as it may reveal some hidden opportunities for the two of you.

New and No are Saturn to each other

Location: Life Spread

This is a very rare connection, found in less than 1% of the population. In addition, this connection is a mutual connection where both New and No give and receive Saturn energy. Because of the uniqueness of this connection, we know that New and No had very specific and special needs in attracting each other. Saturn is a planet that can bring us some of the highest rewards that life has to offer - popularity, good reputation, a role to play that fits us perfectly, and eventual high success in our chosen occupation. Saturn is the most constructive of the connections that exists. Because New and No are attracted to each other, it's as if they are asking for more of these rewards to manifest in their lives. But Saturn is also the teacher and stern disciplinarian. Whether they like it or not, and whether they realize it or not, this relationship is probably their greatest teacher. Each of them has lessons to learn and lessons to teach the other and there will be this mutual exchange throughout their time spent together.

Saturn lessons have a reputation for being difficult, but that is only the case when we are being unconscious about what we are doing, or trying to shirk our responsibilities. Wisdom teaches us that all things come to us through patience and discipline - two of Saturn's keywords. Just in being together, New and No will be learning much about patience, self-discipline, responsibility, effective communications, and what it takes to become more successful in the eyes of the world. The net result of being together will be more awareness of these qualities and the development of these qualities in each of them. This could be a very constructive relationship that propels them both ahead much farther in terms of their careers or roles in the world.

However, if either New or No harbors some weakness in one or more of these areas, and they haven't yet resolved it for themselves, this relationship could end up being like pouring salt on an old wound. With so much Saturn energy between them, it is certain that they will have a high awareness of how they are doing in terms of their success, as well as being keenly aware of the

The First Connection Between You



New



No

things within them that are holding back their success. If, for example, No had some doubts about his abilities, then being with New would only serve to remind him of that. No may not have ever even noticed that he had so many self-doubts before, and all of a sudden, that is all that he thinks about. He could even believe that New is somehow responsible for his self-doubt and begin to blame her. Even though it is actually his self-doubt, it may appear to him that New caused it. This example illustrates how easily a relationship with strong Saturn energy could turn into a negative situation. New and No must have a lot of self-awareness to handle this sort of connection because Saturn will not stand for any illusions to be present in the relationship.

This tends to take away from the romantic aspects of a relationship and divert most of the energy into constructive and practical matters. This would especially be true if this connection is one of the first three found between them. But regardless of where it is found, this connection guarantees that New and No will learn a lot by being together. Regardless of how each of them handles this energy, they will ultimately benefit from having been together.

Affirmation for New: I understand that No and I have a powerful effect on each other and can each see the other's faults and shortcomings. With that in mind, I share my suggestions with him lovingly. Likewise, I realize that his suggestions for me are only meant to better my life.

Affirmation for No: I realize that I chose this relationship with New to help me grow in important areas of my life. With that in mind, I accept her suggestions so that I may learn and make progress in becoming a successful and happy person. I also am able to be New's teacher and share my suggestions for her with love and compassion.

The Second Connection Between You



New and No are Venus to each other

Location: Spiritual Spread

New

No

Connections beyond the first decrease in strength and significance. Therefore, the second will be the next in importance, the third connection next, etc. But each new connection is slightly less significant than the one before it. Keep this in mind as you read their meanings.

This is one of the truly blessed connections. What it implies first of all, is that New and No were together in a meaningful way in a former lifetime. During that lifetime, they were in a significant relationship. It may or may not have been marriage. It could have been best friends, father/son, mother/son, mother/daughter, etc. The important thing is that New and No were very close in that lifetime and spent a lot of time together. Over the course of their relationship, they met with many challenges and overcame them with love, patience and perseverance. They developed a deep love for each other by having shared so much. This lifetime together created much good karma in the area of relationship because each of them made sacrifices for each other and loved each other with a high degree of integrity and commitment.

As a result, when they first met in this lifetime, they recognized a certain familiarity and also noted the ease of being together. Though they are unable to remember their previous life together, the feelings remain for each other on a soul level. When they engage in a relationship in this lifetime, they find that many of the elements that most couples have to earn by being together, such as trust and appreciation for each other, are already present for them. In essence, they already have a good foundation upon which to build any sort of relationship.

This connection is one of the 'love at first sight' connections. But this one is even better than most because it is a mutual connection. Mutual means that both people experience the influence equally. This has the effect of doubling the influence, and in this case, the influence is very favorable to begin with. New and No will find that this relationship is fairly easy, unless other connections strongly contradict. If this connection is between their Birth Cards, the compatibility between them is guaranteed. Having a lot of compatibility is not, however, a guarantee that the relationship itself will work. There are far too many other factors that influence the outcome of relationships for any connection to make that guarantee. However, love is

The Second Connection Between You



New



No

definitely there, and in great abundance.

As a result of this connection, New and No already have a great deal of mutual respect, appreciation and good feelings for each other. In some cases, these feelings may be hard to explain because the two people involved may not actually have a lot in common. This connection can help show New and No just how love can overcome all differences. It is the most powerful force in the universe. There are cases, however, where two people with this connection just cannot be together in this lifetime. The differences in their lifestyle, or life direction are so great that one of them would have to give up too much to make it work. The love is there, along with the understanding that this relationship wasn't meant to happen in this lifetime, or perhaps it will happen later in this lifetime after each has fulfilled some important work they are doing. The love between New and No will remain with them forever - through this lifetime and on into the future. That may be why so many people with this connection feel that they are soul mates. But the truth is that we have these connections with many people, but we will probably only choose to stay with one. Hopefully New and No have enough in common that this will be the case for them. If they only focus on the love they have for each other, everything will work itself out in the best way possible for all concerned. New and No are blessed to have this experience. Just meeting each other could transform their lives.

Affirmation for New: With No, I experience a love that is true and timeless. I am learning that love transcends all boundaries that exist between people and am gratified by being with him. I am truly grateful for this special relationship and consciously choose to expand this love we share so deeply.

Affirmation for No: There is a love I feel for New that is hard to explain, and yet feels so right. I appreciate her presence in my life and welcome the opportunity to be together and experience this love we share.

The Third Connection Between You



No is the Saturn Card to New

Location: Life Spread

New

No

Connections beyond the first decrease in strength and significance. Therefore, the second will be the next in importance, the third connection next, etc. But each new connection is slightly less significant than the one before it. Keep this in mind as you read their meanings.

Saturn has traditionally been known as the planet of hardship, coldness and difficulties of all kinds. And in fact there are some Saturn relationships in which these qualities predominate. However, there are many Saturn relationships that have other qualities, and in these we see the more positive aspects of Saturn's influence. We cannot predict exactly how this relationship between No and New will be affected by this connection because that will depend upon how consciously they choose to apply the energy of this connection. It can be very constructive or it can be difficult and depressing. So, here we will define some of the qualities more specifically so that it can be understood fully.

In this relationship New has somehow chosen No to be her teacher. Though this may not have been a completely conscious choice, it is so just the same. No, being her Saturn Card, will experience a natural inclination to help New by making suggestions for improving her life or career. Just having No in her life is a reminder to New of things she needs to do in order to make her life better than it is. A Saturn person teaches us how to be more responsible, grown-up, practical, disciplined, conscientious and fair. They will help us to become more aware of how our words and actions affect those around us. These lessons can result in New becoming more successful in her work, especially if she has strong career aspirations or goals of things she wants to attain. On some level, No is a father figure to her and indeed he may remind New of her father in many ways.

Taken with a positive attitude, New may make great progress in her life by the presence of No. The closer this connection is to being the first connection in this relationship, the more important this relationship is for New in terms of what she needs to learn. The best possible attitude would be where New acknowledges No as her teacher. Not that she needs to give up her own thoughts or beliefs to No, but just that there are probably things that she can learn from him.

The Third Connection Between You



New



No

In extreme cases a person that is Saturn to us can be abusive. The other side of that coin is a person who inwardly hates who they are so much that they secretly desire to be abused, just as much as they abuse themselves already. In these cases, the Saturn person will be the mirror of our own self-hate and disrespect. Indeed, in these cases, the Saturn person is abusive, verbally and otherwise. The key then, is 'When do we stop being abused by the Saturn person?', or 'When do we start loving ourselves enough to attract someone more loving and considerate?' Our relationships are always a key to find out how we treat ourselves. We invariably choose someone who mirrors the way we feel about our self. New would do well to reflect on this if she finds No exhibiting any of the abusive forms of this Saturn energy.

The most positive Saturn relationships are those that help the partner achieve their dreams by aligning them with the hows and how-to's of success in the world. A Saturn partner can provide us with direction, understanding, coaching and wisdom - all of which can help us achieve our goals. The Saturn person can handle us. They can put us in our place, where other people may be unable to do so. Therefore we can develop a lot of trust and respect in them. And sometimes that is just what we need, someone to show us the boundaries and discipline us a little. If New is, or was, strongly attracted to No, then this is very likely the case.

Affirmation for No: I understand that I have the ability to see all of New's faults and shortcomings and share suggestions with her lovingly and with the awareness that I have a powerful effect on her.

Affirmation for New: I realize that I chose this relationship with No to help me grow in important areas of my life. With that in mind, I accept his suggestions so that I may learn and make progress in becoming a successful and happy person.

The Fourth Connection Between You



New is the Venus Card to No

Location: Life Spread

New

No

Connections beyond the first decrease in strength and significance. Therefore, the second will be the next in importance, the third connection next, etc. But each new connection is slightly less significant than the one before it. Keep this in mind as you read their meanings.

This is a wonderful connection for any kind of relationship and guarantees that New and No can be good friends at the very least. The fact is that they both have a lot in common. This gives them many things that they can share and do together. It is a wonderful sign of compatibility and adds a lot to the potential of this relationship to be successful.

In particular, No just adores New. Even though he may get mad at her at times or irritated by things she does or says, there is an underlying current of love that is always there that No can tap into and experience at any time. This essential compatibility helps them be 'friends first, everything else second' in their relationship. This 'friends first' attitude will help them when conflicts arise. It will allow them to let go of personal demands in order to be a friend to their partner. This can have a powerful positive effect on the relationship and allow them to resolve difficulties in a relatively short amount of time.

It is also very likely that New and No have a similar, if not the very same, set of values. This means that they give importance to similar things in life. They may have similar life goals or directions, or merely like the same kinds of pleasures.

This is also a pleasure aspect. Sexually, New and No should be very compatible. They will enjoy similar experiences and have similar likes and dislikes. This makes their time together more enjoyable and gives them many options and possibilities of things to do together.

Put all of this together and we can see that New and No have very good chances of success as a couple. Unless other connections between them conflict heavily, this one connection alone can be a guarantee of high compatibility. To get the most out of this connection, New and No only need to remind themselves from time to time of all the wonderful things they share and focus on those things.

Affirmation for New: I love being with No, with whom I have so much in

The Fourth Connection Between You



New



No

common, and enjoy being appreciated so much by him. I think we could spend our entire life together.

Affirmation for No: I appreciate all that New and I have in common. It is the many things that we share that make our life together so enjoyable. I tell New just how grateful I am for her presence in my life.

The Fifth Connection Between You



New



No

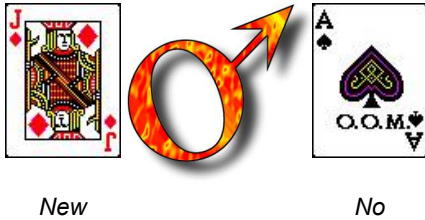
No is the Mars Card to New
Location: Spiritual Spread

Connections beyond the first decrease in strength and significance. Therefore, the second will be the next in importance, the third connection next, etc. But each new connection is slightly less significant than the one before it. Keep this in mind as you read their meanings.

This is one of those 'instant recognition', past-life connections that is responsible for many marriages and friendships. This connection tells us that No and New have shared some past lives together. In one of those lifetimes they developed a strong Martian energy between them, which in this lifetime seeks resolution. Now, in this lifetime, there is a strong likelihood that No and New will feel some sort of familiarity when they meet, and there could be a strong attraction that draws them together. Martian energy is either passionate and aggressive or competitive and hostile. Often it is a curious mixture of the passion and hostile energies.

In particular, No is a strong stimulant to New. He will either excite her, make her angry or both. Martian energy is power that must be managed and handled consciously if it is to create positive results in our lives. Therefore, New will have a great responsibility to channel this energy into positive activities. Lovemaking is a wonderful outlet for this energy and there is no doubt that passion exists for this couple. In many cases, this connection exists between a couple who had unfulfilled passion for each other from the past life in question. It was an unconsummated love that for whatever reason, was never allowed to run full circle. Now, when they meet in this lifetime, the passion is right there, as if it had just been waiting for them to meet to be realized. 'Lust at first sight' might describe it quite well.

The Fifth Connection Between You



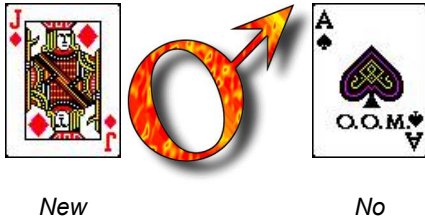
But there is an equal possibility that No and New were involved in some other sort of relationship in that lifetime which resulted in unresolved feelings of anger or hostility. If this is the case, the two of them will have to work on correcting this because any hostility we feel for another will have to eventually be transformed into love. Other connections between No and New may reveal whether or not this is the case. But they will probably already know the answer to this question from their personal feelings about each other.

Regardless of the reason for their getting together, in the here and now they will have to come up with a formula to deal with this Mars energy they share. One of the most positive outlets for this energy is to work together. As a matter of fact, most of the couples who have successful working and romantic relationships have one or more strong Mars connections between them. Working together provides a wonderful outlet for all those Martian energies. The energy becomes a blessing in their relationship, inspiring them to be productive and to 'get going'. Other good things to do with Mars energy is to get outside and walk, hike, ride bicycles, jog, and other forms of shared physical exertion. No and New will find that engaging in these kinds of activities always brings them closer together and funnels off the competitive and aggressive energies into positive pursuits.

When there are Mars connections, regardless of what else exists between two people, we know that there are some anger issues to work on in the context of their being together. In this relationship, New is probably the one who allows No to anger her. Because No is her Mars Card, she is the one who is reacting to No as a Mars influence. She also bears the greater responsibility for this anger or competitiveness when it comes up. The trick to dealing with anger issues effectively is to realize that rarely do people do or say things to make us mad on purpose. It is often our interpretation of their actions or words that makes us angry. This is the challenge for New and she probably chose No to have the opportunity to work on this.

In conclusion, this relationship provides a powerful stimulus for both partners, even though New may be affected a little more since she is the one receiving most of the Mars energy. If No and New take this energy and put it

The Fifth Connection Between You

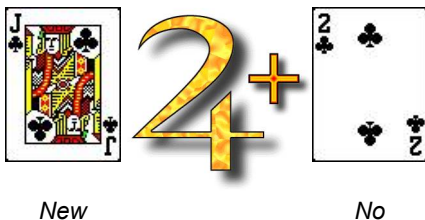


to work they can benefit from the constructive activities it inspires. They probably were attracted to each other because on some level they wanted to get their lives going in a positive direction. With so much energy at their disposal, there is much they can accomplish, as long as they keep it well-managed and directed.

Affirmation for No: I am aware of how much I stimulate New and understand her feelings. With this awareness I consciously guide my actions and help us both by encouraging positive outlets for this powerful energy we share.

Affirmation for New: I accept No as a powerful stimulus in my life and choose to take responsibility for my own emotional reactions to him. With his help, I am diffusing my own anger and channeling my energy into positive directions.

The Sixth Connection Between You



New is the Cosmic Reward Card to No
Location: Spiritual Spread

Connections beyond the first decrease in strength and significance. Therefore, the second will be the next in importance, the third connection next, etc. But each new connection is slightly less significant than the one before it. Keep this in mind as you read their meanings.

This is a past-life connection and one that has strong, spiritual overtones. The Cosmic Reward Card is associated with Jupiter and as such can be a blessing in our life. But whereas Jupiter's blessings are often of a financial nature, the Cosmic Reward Card's blessings are usually of a less material nature. In its highest manifestation, the Cosmic Reward connection will bring us experiences that validate our own importance in the universe, helping us feel connected and blessed by higher powers. We can receive guidance and confirmation about our life and its purpose. Feelings can arise that inspire us, enliven us and make us feel good about living. These are things that we often do not value much until we have advanced in age to some degree. In general, we say that Cosmic Reward relationships are perceived as more of a blessing after the age of 35. But this is only based on averages and norms. Anyone can be more interested in these things at any age.

The Sixth Connection Between You



New

No

No is the one who is receiving this Cosmic Reward influence from New. This means that New could be a very important blessing in his life, if he is willing and able to receive it. Since the Cosmic Reward Card follows the Pluto Card, it is often only after we have done our own work of personal transformation, indicated by our Pluto Card, that we are rewarded, so to speak, by our Cosmic Reward Card. The Cosmic Reward Card, is, in any case, something that we are destined to become or achieve in this lifetime. This means that No may feel drawn to New because he can perceive that New has these qualities that are a part of his destiny. If No is creating a happy life for himself, New will be a natural part of that happiness, if other connections do not strongly indicate otherwise.

This connection guarantees that this relationship has a certain amount of compatibility potential. New truly feels encouraged to give to No and to share her wealth and abundance with him. This giving attitude can be part of a good foundation for a successful relationship. But, if No has not yet dealt with his own need for change in this lifetime, New may just serve as a reminder to him of this fact. If this is the case, New may seem more of a confronting and challenging influence to No.

So, we see that much of how this connection affects the relationship lies in the hands of No. It is for him to decide what to make of it. Hopefully, he will be ready to receive New as the blessing in his life that she has the potential to be. Later, he may realize that they were destined to be together, which is a common experience with this connection.

Affirmation for New: I am glad to be a blessing in No's life and hope that I can give him all that I have to give. I understand that he may be challenged by me at times and have compassion for this. I only wish the best for him.

Affirmation for No: I am grateful for the presence of New in my life. I accept all the good things that she brings into my life and respond with appreciation and gratitude. In this way I multiply my blessings.

The Seventh Connection Between You



No is the Jupiter Card to New

Location: Life Spread

New

Connections beyond the first decrease in strength and significance. Therefore, the second will be the next in importance, the third connection next, etc. But each new connection is slightly less significant than the one before it. Keep this in mind as you read their meanings.

No

This is a wonderful connection that is often found among the cards of happy and productive relationships. One of the main benefits of it is the financial end but it has other significant benefits as well. Jupiter is known among astrologers as the 'great benefic'. It is the only planet in our solar system that gives off more energy than it receives from the Sun. Its location in our natal astrological chart always points to some area of our life where things come easily to us and where we have many blessings to be thankful for. In this relationship, New has much to be thankful for, thanks to No, because he is a major blessing in New's life.

These blessings may take many forms but they are often of the financial nature. Even though as a couple No and New may not be wealthy, No definitely likes to give things, including money, to New. This natural inclination to give is one of the signs of prosperity consciousness. Therefore, if not now, it could lead to great financial success in the future. This is an especially strong possibility if New expresses and feels appreciation for No. Appreciation is one of the most important keys in obtaining prosperity. If New will allow the appreciation engendered by this connection to grow, and if she expresses this verbally, this relationship could bloom into a prosperous and happy life together where there is much more money and things than they could ever use or need.

On other levels the Jupiter connection can bring blessings of many forms. There could be a sharing of philosophies and spiritual ideals. No may provide beneficial guidance and inspiration to New. Essentially he will have a natural desire to give whatever he has that New values. If New wants to see the blessings in this relationship grow, just remember to feel and express the appreciation, as was mentioned earlier.

This connection increases the overall compatibility between No and New to a good degree. The fact that they have this connection points to some good karma for both of them, something that they earned by doing good deeds for

The Seventh Connection Between You



New

No

others in the past. It is a sign of good fortune and if harnessed in the ways mentioned above, will develop into one of the cornerstones of their happiness together and provide the prosperity that will ensure an abundant and happy future.

Affirmation for No: I am glad to be a blessing in New's life and hope that I can give her all that I have to give. I allow myself to express my generosity in its fullest with no expectation that New must act in any particular way as payment for my giving. My giving is complete in and of itself.

Affirmation for New: I am grateful for the presence of No in my life. I accept all the good things that he brings into my life and respond with appreciation and gratitude. In this way I multiply my blessings and transform our relationship into a powerful force for prosperity, peace and abundance.

The Eighth Connection Between You



New

No

New is the Mars Card to No
Location: Life Spread

Connections beyond the first decrease in strength and significance. Therefore, the second will be the next in importance, the third connection next, etc. But each new connection is slightly less significant than the one before it. Keep this in mind as you read their meanings.

New has a definite impact on No in this relationship. She has a way of making No feel stimulated. Often this stimulation can be of a sexual nature. For this reason, the Mars connection is often a deciding factor in our choice of partners. There is no doubt that No was or is attracted to New on this level. He may enjoy this energetic connection or, at other times, be annoyed by it. If No sometimes gets mad at New, this is because Mars energy can be destructive at times if not harnessed and channeled into positive pursuits. The things that turn No on may also be the same things which anger him at other times. This is how Mars energy works with everyone. It is a fact that the relationships we desire the most are usually the ones that can stimulate the most hostility at other times. When Mars energy is not used constructively it can result in fighting, resentment, hostility and in some cases, all out war.

The Eighth Connection Between You



New

No

But No can use this information and consciously transform the often negative effects of this Mars connection into positive directions. It is not that difficult to keep a Mars relationship healthy. It just requires some awareness and thoughtfulness. New can actually be a catalyst to get him out of the house and doing things. To give this powerful Mars energy something constructive to do, it is recommended that New and No go outside and do things together, or at the very least, find something productive to do together with this energy. Couples with this connection usually go walking, hiking, jogging, riding bicycles or participate in other forms of physical exertion. All of these and others serve to exhaust the Mars energy and satisfy it. When they do these sorts of activities together, they will always notice that they feel better, both personally and about each other, afterwards.

If New and No have any desire to work together, they have found the perfect partner to do it with. Many successful working partnerships have this valuable Mars connection. But even in this case, No should be on the lookout for the anger and competitive sides of this influence.

Because No is the one who is on the receiving end of this powerful Martian force, it is likely that he has 'anger issues' to work out that are stimulated by New's presence in his life. It may appear that New seems intent on doing things that make him mad, even without knowing it. If New realizes this, she will be less likely to take offense at his reactions and words. In fact, New is probably not doing any of the things that No thinks she is doing. This connection tells us that No is the one who is the most influenced by this connection, and so he is also the one who bears the greatest responsibility for dealing with the emotions that are associated with it. If there are other Mars connections between them, this becomes even more important. Anger is actually a mistaken belief that others are intentionally disregarding us or trying to hurt us in some way. This 'misbelief' can be dismantled with awareness of what is going on and maintaining good communications.

This connection provides a lot of the spark and magic in this relationship. If New and No use it with care, it can bring them much of what they want out of life. Any negative manifestations of this powerful energy can be controlled

The Eighth Connection Between You



New

No

and eliminated through conscious awareness and when this is the case, it becomes like a genie in a bottle who can grant them all their wishes.

Affirmation for New: I am aware of how much I stimulate No and understand his feelings. With this awareness I consciously guide my actions and help us both by encouraging positive outlets for this powerful energy we share.

Affirmation for No: I accept New as a powerful stimulus in my life and choose to take responsibility for my own emotional reactions to her. With her help, I am diffusing my own anger and channeling my energy into positive directions.

The Ninth Connection Between You



New

No

No is the Saturn Card to New

Location: Spiritual Spread

Connections beyond the first decrease in strength and significance. Therefore, the second will be the next in importance, the third connection next, etc. But each new connection is slightly less significant than the one before it. Keep this in mind as you read their meanings.

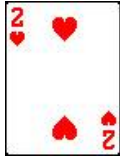
This connection tells us that No and New have some score to settle from a past life. There was some unfinished business that now has an opportunity to be resolved in this lifetime. This is especially true if New is strongly attracted to No. Now, in this lifetime, they can take up where they left off. The essential message of this connection is that No has something to teach New. That something could be one of many things. Lessons come in all shapes and sizes. Some are about relationship, some are about career or dealing with money. Others are about self-esteem, honesty, faithfulness, responsibility and fairness. We don't know which of these lessons are the ones being dealt with in this lifetime, but we do know that something important will be transferred in the course of this relationship.

It is likely that No and New felt a strong attraction when they first met, and even that they felt this sort of ease and familiarity that is associated with all of the past-life connections. There could have been great romantic feelings as well. However, this connection tells us that there is also a very practical side to this relationship, one in which New will be influenced by No to become

The Ninth Connection Between You



New



No

more successful, responsible and practical. No could have even been New's father in a former lifetime - a lifetime in which his role as father didn't get the opportunity to be fully expressed. However, this is only one of the many ways this connection could have originated.

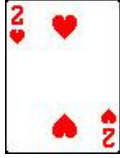
It is certain that there is some form of 'karmic debt' that is being paid off over the course of this relationship and it is noted that many relationships with Saturn connections last a long time. Sometimes, paying off this debt is the main reason for this relationship in the first place. Though other connections may describe various characteristics of their being together, this karmic repayment may be the most important reason that No and New are together. And keep in mind that the payment is being made from No to New, and that the payment is some sort of lesson about life. We must also keep in mind that No is just as much bound to pay this lesson as New is to receive it. This relationship is important to both of them, but each for their individual reasons.

Relationships like these show us God's hand in motion. We see God's plan for us unfolding. If we pay attention, we can learn a lot about the ordered nature of our universe and reality. This relationship demonstrates how every cause has an effect, every effect has a cause, and how some of our relationships have a broader purpose than to just be in love or to raise a family. Saturnian energies are often difficult but this relationship does not have to be so. If there is a mutual feeling of growth and openness between No and New, this relationship can be experienced as a very positive influence for both of them, one that leads them to more productive and happy lives.

Affirmation for No: I understand that I have the ability to see all of New's faults and shortcomings and share suggestions with her lovingly and with the awareness that I have a powerful effect on her.

Affirmation for New: I realize that I chose this relationship with No to help me grow in important areas of my life. With that in mind, I accept his suggestions so that I may learn and make progress in becoming a successful and happy person.

The Tenth Connection Between You



New is the Venus Card to No

Location: Spiritual Spread

New

No

Connections beyond the first decrease in strength and significance. Therefore, the second will be the next in importance, the third connection next, etc. But each new connection is slightly less significant than the one before it. Keep this in mind as you read their meanings.

This is one of those 'love at first sight' connections that is responsible for many successful marriages and friendships. This connection tells us that New and No have shared some past lives together. In at least one of those lives, they were involved in a long-term relationship into which they each had to put a lot of effort in order to maintain harmony and compatibility. In that lifetime, they developed a deep love and respect for each other, as well as trust. Now, when they meet in this lifetime, they almost immediately sense this other soul with whom they have shared so much. They may or may not actually enter into a committed relationship during this lifetime, but what matters most is that a love exists between them that was already there, which will remain forever more.

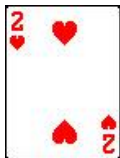
If they do decide to get together again, they have what few other couples have and that is a great head start. Because they have already worked out the mutual trust, respect and admiration for each other, they can immediately advance to a very compatible and harmonious life together. They may or may not actually have much in common. In this lifetime, the personalities that they have may be much different than before. Other connections, especially among the Planetary Ruling Cards, will reveal how their personalities actually interact in this lifetime. There are cases where the personality differences are so great that it becomes impractical for them to be together as a couple. The love is there and it is strong, but their personal directions may be much different in the current lifetime. In those cases, the love is recognized and acknowledged, but never completely consummated.

This connection makes believers of those who doubt that love is forever. The fact that New and No have found each other is a sign of good fortune for both. These kinds of relationships only happen to those who have some purity of heart and who are aware enough to recognize the value of it. So, we can say that New and No have reached some high degree of loving in order to have found each other again. It is a good sign and a blessing. Hopefully they will be

The Tenth Connection Between You



New



No

able to take this foundation of mutual love, respect and admiration and go forth to create a beautiful future for themselves.

Affirmation for New: It feels very right to be with No, with whom I share some kind of deep and timeless love. I appreciate his presence in my life and feel blessed by it.

Affirmation for No: I experience a love for New that is hard to describe, and yet feels very familiar and right. I sense that we have been together before and look forward to more time together to share this unique love that we have for each other.